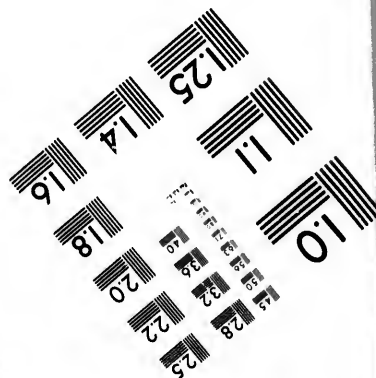
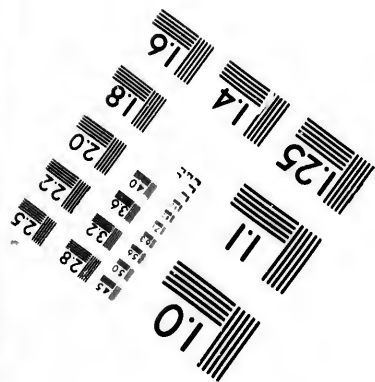
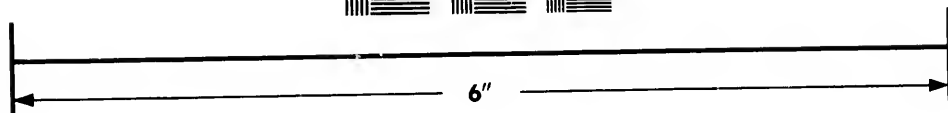
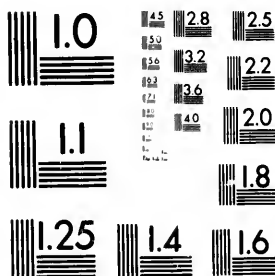


**IMAGE EVALUATION
TEST TARGET (MT-3)**



**Photographic
Sciences
Corporation**

23 WEST MAIN STREET
WEBSTER, N.Y. 14580
(716) 872-4503

**CIHM/ICMH
Microfiche
Series.**

**CIHM/ICMH
Collection de
microfiches.**



Canadian Institute for Historical Microreproductions / Institut canadien de microreproductions historiques

© 1982

Technical and Bibliographic Notes/Notes techniques et bibliographiques

The Institute has attempted to obtain the best original copy available for filming. Features of this copy which may be bibliographically unique, which may alter any of the images in the reproduction, or which may significantly change the usual method of filming, are checked below.

L'Institut a microfilmé le meilleur exemplaire qu'il lui a été possible de se procurer. Les détails de cet exemplaire qui sont peut-être uniques du point de vue bibliographique, qui peuvent modifier une image reproduite, ou qui peuvent exiger une modification dans la méthode normale de filmage sont indiqués ci-dessous.

- Coloured covers/
Couverture de couleur
- Covers damaged/
Couverture endommagée
- Covers restored and/or laminated/
Couverture restaurée et/ou pelliculée
- Cover title missing/
Le titre de couverture manque
- Coloured maps/
Cartes géographiques en couleur
- Coloured ink (i.e. other than blue or black)/
Encre de couleur (i.e. autre que bleue ou noire)
- Coloured plates and/or illustrations/
Planches et/ou illustrations en couleur
- Bound with other material/
Relié avec d'autres documents
- Tight binding may cause shadows or distortion along interior margin/
La reliure serrée peut causer de l'ombre ou de la distortion le long de la marge intérieure
- Blank leaves added during restoration may appear within the text. Whenever possible, these have been omitted from filming/
Il se peut que certaines pages blanches ajoutées lors d'une restauration apparaissent dans le texte, mais, lorsque cela était possible, ces pages n'ont pas été filmées.
- Additional comments:/
Commentaires supplémentaires:

- Coloured pages/
Pages de couleur
- Pages damaged/
Pages endommagées
- Pages restored and/or laminated/
Pages restaurées et/ou pelliculées
- Pages discoloured, stained or foxed/
Pages décolorées, tachetées ou piquées
- Pages detached/
Pages détachées
- Showthrough/
Transparence
- Quality of print varies/
Qualité inégale de l'impression
- Includes supplementary material/
Comprend du matériel supplémentaire
- Only edition available/
Seule édition disponible
- Pages wholly or partially obscured by errata slips, tissues, etc., have been refilmed to ensure the best possible image/
Les pages totalement ou partiellement obscurcies par un feuillet d'errata, une pelure, etc., ont été filmées à nouveau de façon à obtenir la meilleure image possible.

This item is filmed at the reduction ratio checked below/
Ce document est filmé au taux de réduction indiqué ci-dessous.

10X	14X	18X	22X	26X	30X
<input type="checkbox"/>	<input type="checkbox"/>	<input checked="" type="checkbox"/>	<input type="checkbox"/>	<input type="checkbox"/>	<input type="checkbox"/>
12X	16X	20X	24X	28X	32X

The c
to the

The i
possi
of the
filmi

Origi
begin
the la
sion,
other
first p
sion,
or illu

The li
shall
TINU
which

Maps
differ
entire
begin
right
requi
meth

The copy filmed here has been reproduced thanks to the generosity of:

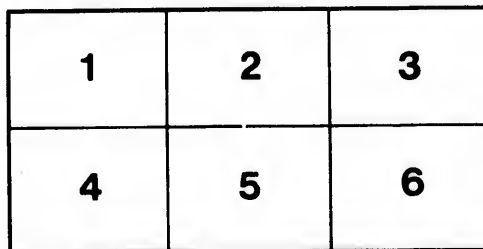
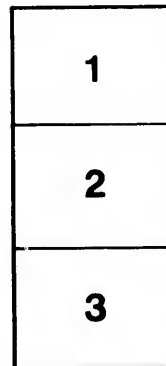
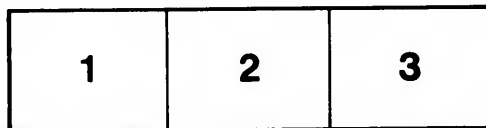
Metropolitan Toronto Library
Fine Art Department

The images appearing here are the best quality possible considering the condition and legibility of the original copy and in keeping with the filming contract specifications.

Original copies in printed paper covers are filmed beginning with the front cover and ending on the last page with a printed or illustrated impression, or the back cover when appropriate. All other original copies are filmed beginning on the first page with a printed or illustrated impression, and ending on the last page with a printed or illustrated impression.

The last recorded frame on each microfiche shall contain the symbol → (meaning "CONTINUED"), or the symbol ∇ (meaning "END"), whichever applies.

Maps, plates, charts, etc., may be filmed at different reduction ratios. Those too large to be entirely included in one exposure are filmed beginning in the upper left hand corner, left to right and top to bottom, as many frames as required. The following diagrams illustrate the method:



L'exemplaire filmé fut reproduit grâce à la générosité de:

Metropolitan Toronto Library
Fine Art Department

Les images suivantes ont été reproduites avec le plus grand soin, compte tenu de la condition et de la netteté de l'exemplaire filmé, et en conformité avec les conditions du contrat de filmage.

Les exemplaires originaux dont la couverture en papier est imprimée sont filmés en commençant par le premier plat et en terminant soit par la dernière page qui comporte une empreinte d'impression ou d'illustration, soit par le second plat, selon le cas. Tous les autres exemplaires originaux sont filmés en commençant par la première page qui comporte une empreinte d'impression ou d'illustration et en terminant par la dernière page qui comporte une telle empreinte.

Un des symboles suivants apparaîtra sur la dernière image de chaque microfiche, selon le cas: le symbole → signifie "A SUIVRE", le symbole ∇ signifie "FIN".

Les cartes, planches, tableaux, etc., peuvent être filmés à des taux de réduction différents. Lorsque le document est trop grand pour être reproduit en un seul cliché, il est filmé à partir de l'angle supérieur gauche, de gauche à droite, et de haut en bas, en prenant le nombre d'images nécessaire. Les diagrammes suivants illustrent la méthode.



TORONTO PUBLIC LIBRARY

TORONTO'S
Jubilee
Casket

BY

RYRIE BROS.,

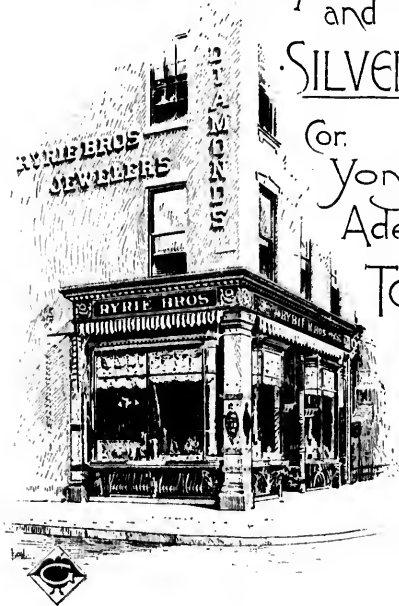
TORONTO.

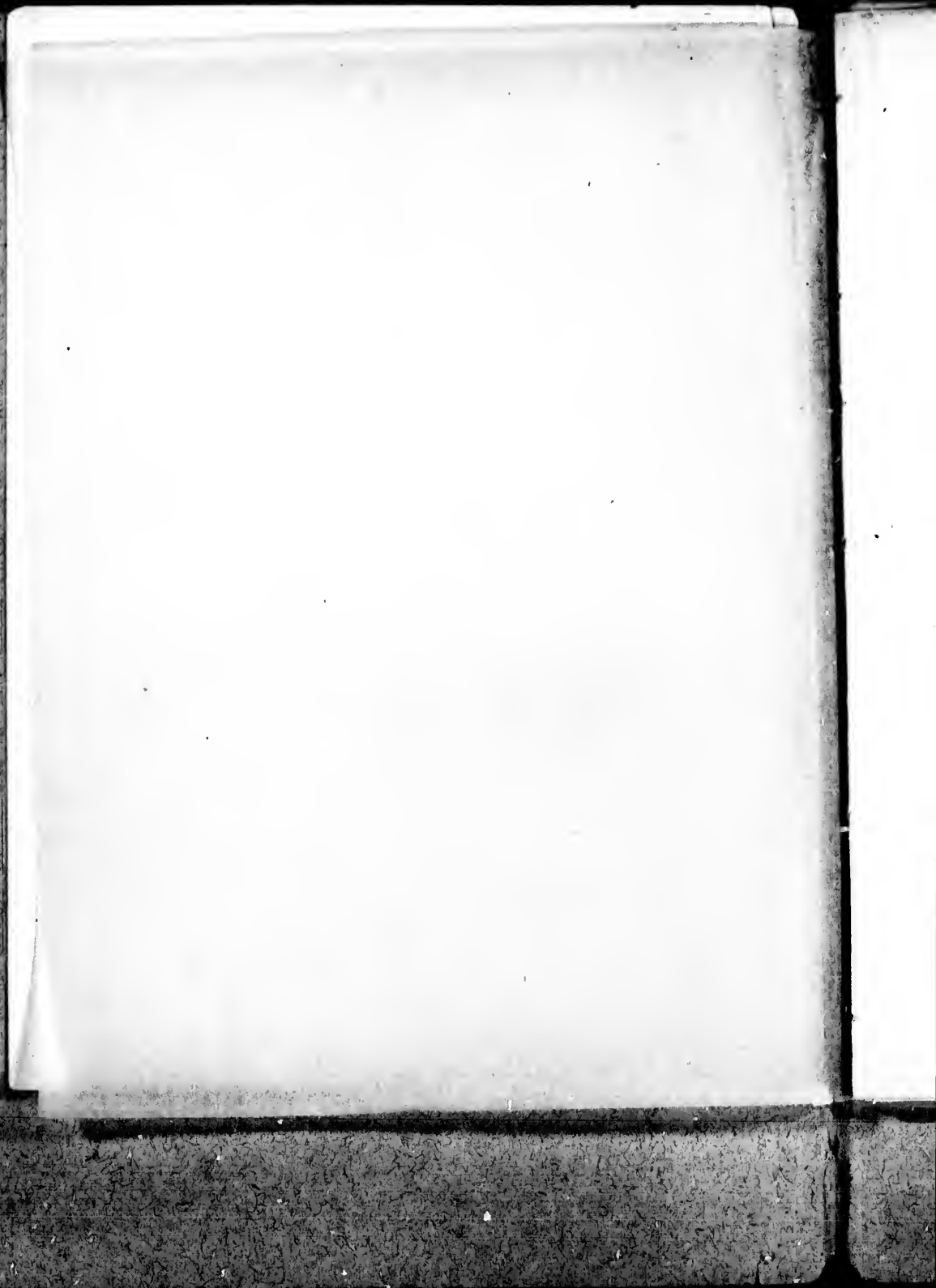


RYRIE BROS
DIAMOND MERCHANTS
and
SILVERSMITHS

Cor.
Yonge and
Adelaide Sts.

TORONTO
CAN





TORONTO'S TRIBUTE

TO



HER MAJESTY
QUEEN VICTORIA,



ON THE OCCASION OF

HER DIAMOND JUBILEE,

1897.

AR

739.2284

R93





INTRODUCTION.

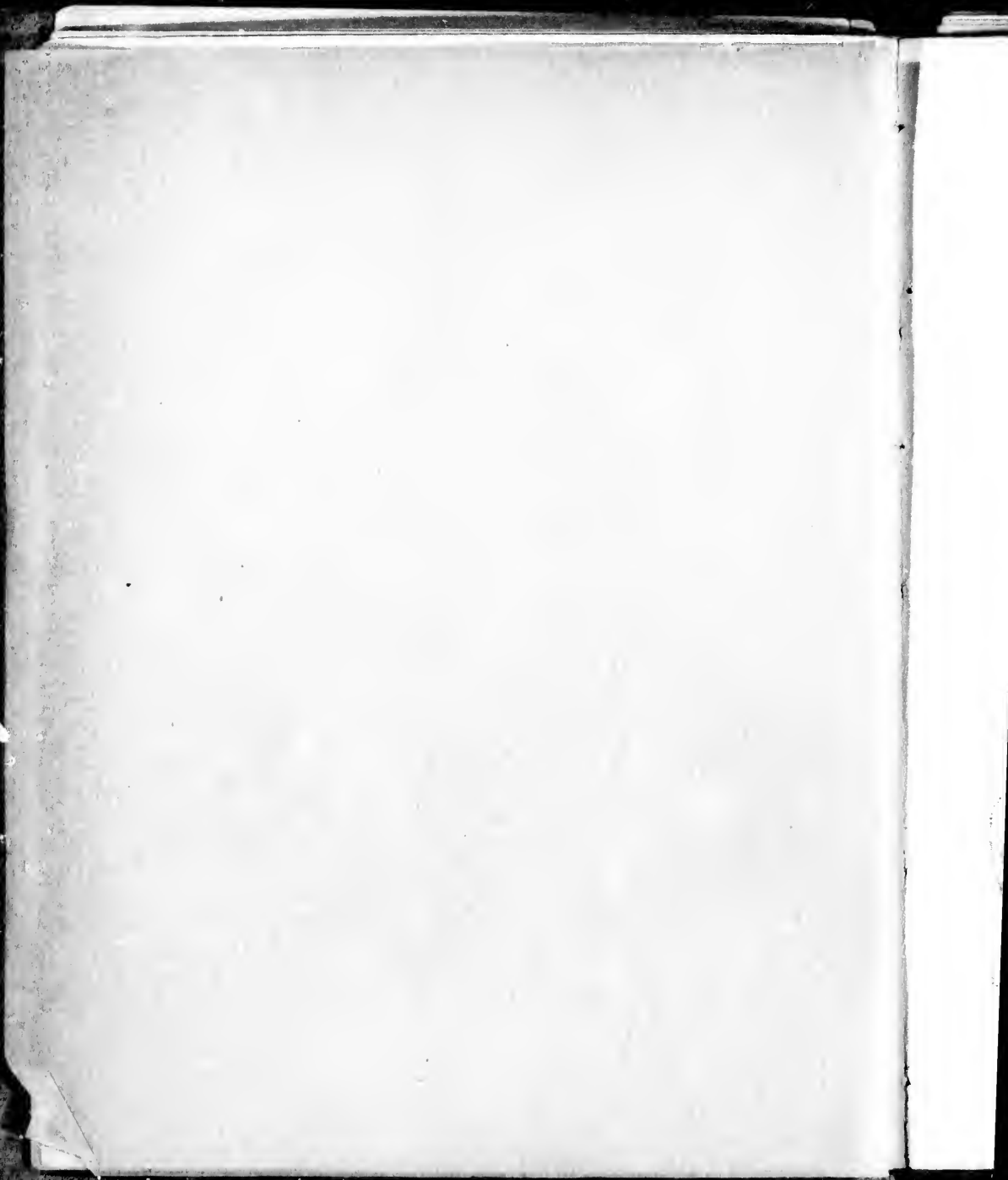


N EVENT of such importance as the completion of the sixty years' reign of our most gracious Queen may well be made the occasion of general rejoicing. Demonstrations on a scale that has been unknown for centuries will take place in London on June 22nd. From loyal hearts throughout the Empire, upon which it is truly said the sun never sets, will come congratulations. The Council of the City of Toronto recently decided to send the congratulations of the Queen City to Her Majesty in the form of an address, to be enclosed in an appropriate silver casket. Designs for this casket were called for, and, from the nine submitted, that of Ryrie Bros. was selected as being the most appropriate.











THE OUTER CABINET.

1



INSCRIPTION.

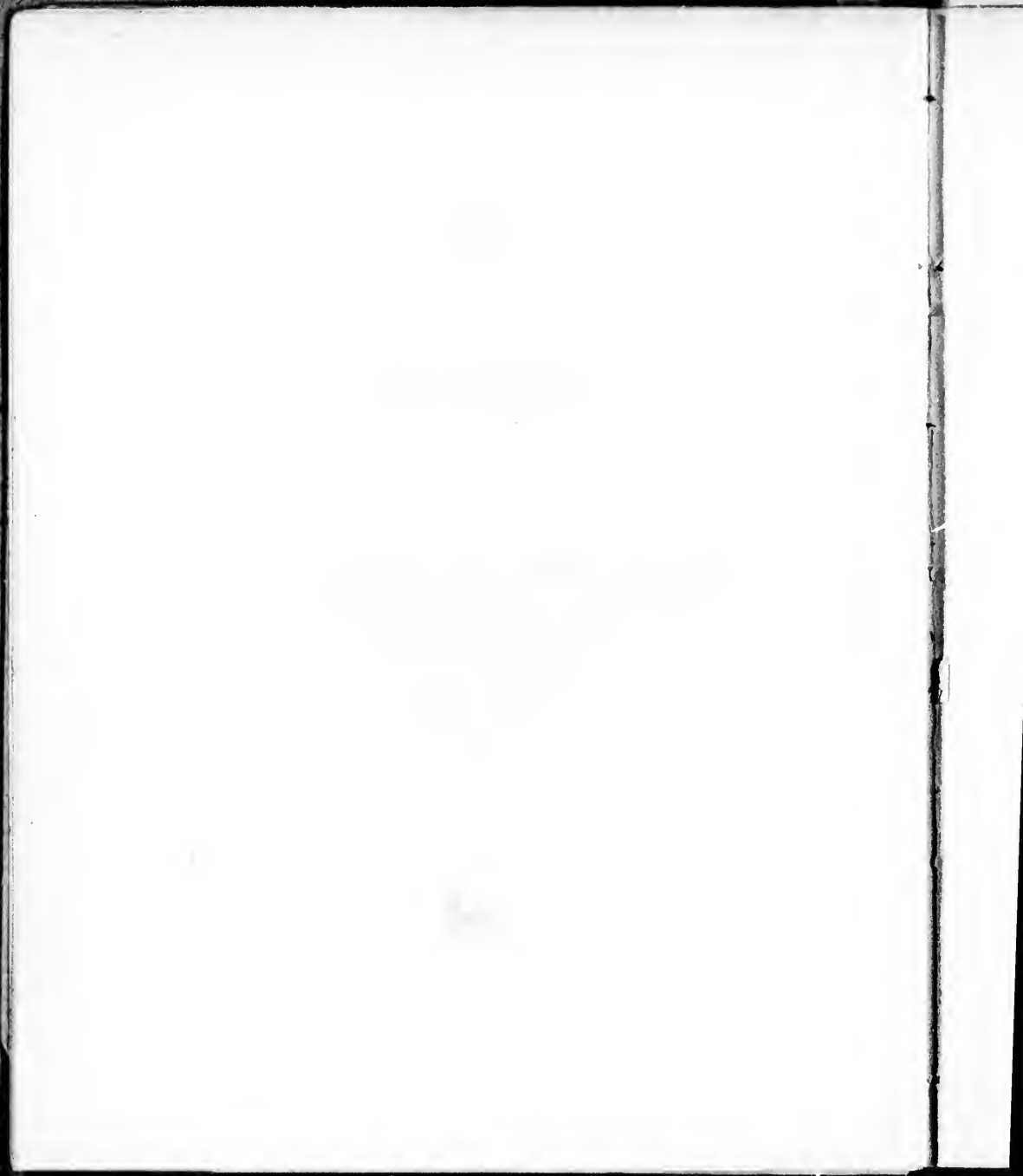


FRONT.



Address by the Mayor and Corporation of the City
of Toronto on behalf of the Citizens to
Her Gracious Majesty
Queen Victoria,
June 22nd,
1897.







INSCRIPTION.



BACK.



Committee of the City Council:

Ald. Hallam, Chairman.

His Worship the Mayor.

Ald. Preston.

Ald. Scott.

Ald. Rutter.

Ald. Leslie.

Ald. Sheppard.

Ald. Shaw.

Ald. Spence.

Ald. Saunders.



Ald. Carlyle.



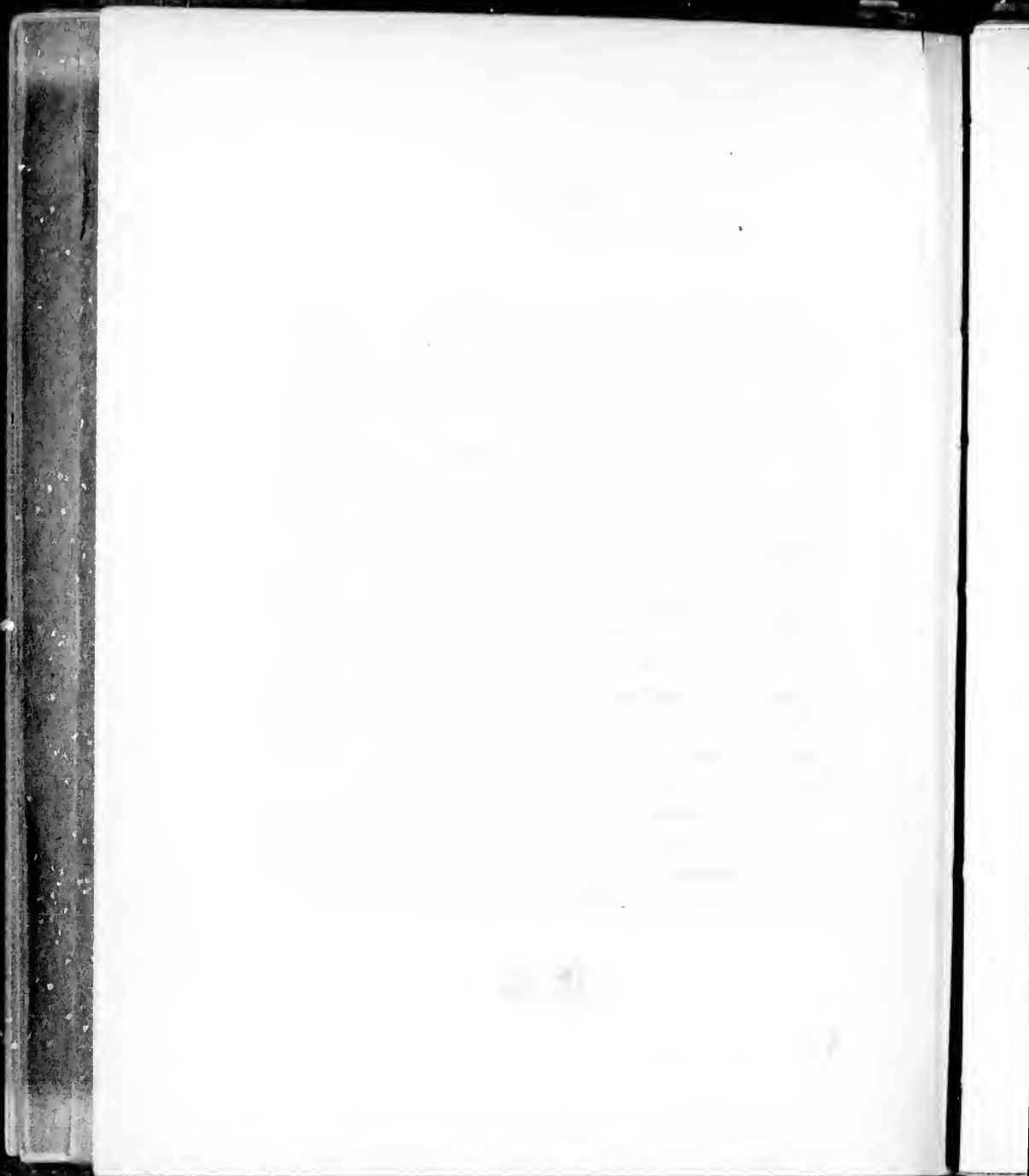




Some of the features of this casket are worthy of special mention: The material throughout is strictly Canadian and widely representative. The gold used in the crown is from the LeRoi mine in British Columbia, being voluntarily donated by the owners for this purpose. The silver is from the mines in the Slocan district; whilst the base upon which the casket rests is chiselled from a single piece of ore out of the celebrated War Eagle mine. Set around the casket are numbers of Canadian semi-precious stones—in all twenty-two varieties, gathered from six provinces, which speak volumes for the mineral resources of our great Dominion. The only parts of the material used in the work not wholly Canadian are six diamonds, one for each decade of Her Majesty's reign, which are set in the crown. These it need hardly be said are used as befitting the occasion of the Diamond Jubilee.

In the construction of the casket the makers have expended much more than the amount appropriated, being determined to produce a work of art worthy to hold a high place among the tributes of the nations.







THE FRONT.



BOST prominent is a reproduction of the new city buildings in relief. On the left are columns of Sodalite (Dungannon, Ont.) and Brecciated Jasper, (Hull, Que.) and on the right, Sodalite (Dungannon, Ont.) and Wilsonite (Burgess, Ont.) Below are six bosses of polished stones—Porcelanite (Two Islands, N. S.,) Labradorite (Labrador), Perthite (Burgess, Ont.,) Aventurine (Sebastopol, Ont.,) Porphyry (Lake Superior), Amethyst (Lake Superior). The front of the cover shows the name "Toronto" in colored hard enamel, having a column of gray jasper on one side and of brown on the other, both from Digby, N. S. Above all is the Imperial Crown resting on a crimson enamel cushion.

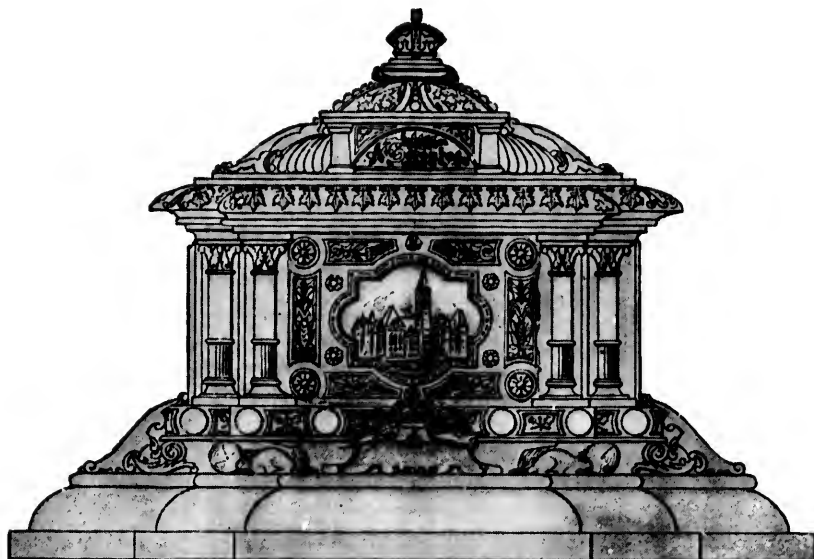


1864

1st of March

Dear Mother

I received your kind letter of the 27th and was glad to hear from you. I am well and hope these few lines will find you the same. I have not much news to write at present. The weather is very cold here now. I have not seen any of the children for some time. I hope they are all well. I have not much news to write at present. I have not much news to write at present.



THE FRONT.



AUTHORIZED CAPITAL STOCK \$2,000,000
HEAD OFFICE, TORONTO. PAID UP \$1,680,000 REGISTERED OFFICE,
ROSSLAND, B.C.

THE WAR EAGLE
CONSOLIDATED MINING AND DEVELOPMENT
COMPANY, LIMITED.

13 AND 14 GODDERHAM BUILDING, 40 WELLINGTON ST. EAST.

GEO. GOODERHAM, PRESIDENT.
T. G. BLACKSTOCK, VICE-PRESIDENT.

><

Toronto, 17th May, 1897.

Messrs. Ryrie Bros.,
Toronto.

Dear Sirs,—We have pleasure in handing you a brick of gold sent to us by our friends of the Le Roi mine. I also enclose herewith a letter from Mr. W. W. D. Turner, President of the Le Roi Gold Mining Co., couched in most liberal and loyal terms, claiming a RIGHT to contribute the gold necessary for the work free of expense.

The piece of ore for the base of your Jubilee Casket, which our Mr. Hastings of THE WAR EAGLE CONSOLIDATED MINING AND DEVELOPMENT CO., Limited, has forwarded, is, Mr. Hastings assures us, an especially fine specimen and worthy of the purpose for which it is intended.

Yours very truly,


The War Eagle Consolidated Mining and
Development Co., Limited,

GEO. GOODERHAM, President.

[Faint, illegible text, likely bleed-through from the reverse side of the page.]

LEFT SIDE.



THE central panel is the City coat-of-arms, the supporting figures in relief, with the shield, ribbon and motto in the proper colors, hard enamel; the left column—Pyroxene (Templeton, Que.,) the right—Sodalite (Dunganon, Ont.) Below, within a wreath, is the date 1897; a boss of Alabaster (Hillsborough, N. B.) on the left, and of Chert (Thunder Bay) on the right. The cover above shows "60 years" in monogram, with the words "Justice and Prosperity."  Surmounting all is the Imperial Crown on its cushion.



THE BASE.

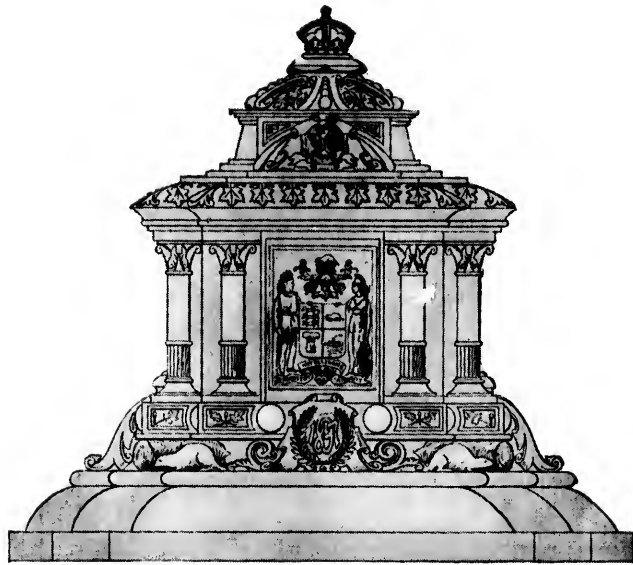


In the light of the recent development of Canadian mining nothing could be more appropriate than the base of gold ore. Upon this, and supporting the casket, are four beavers, each beside a log of silver, cast from special designs.

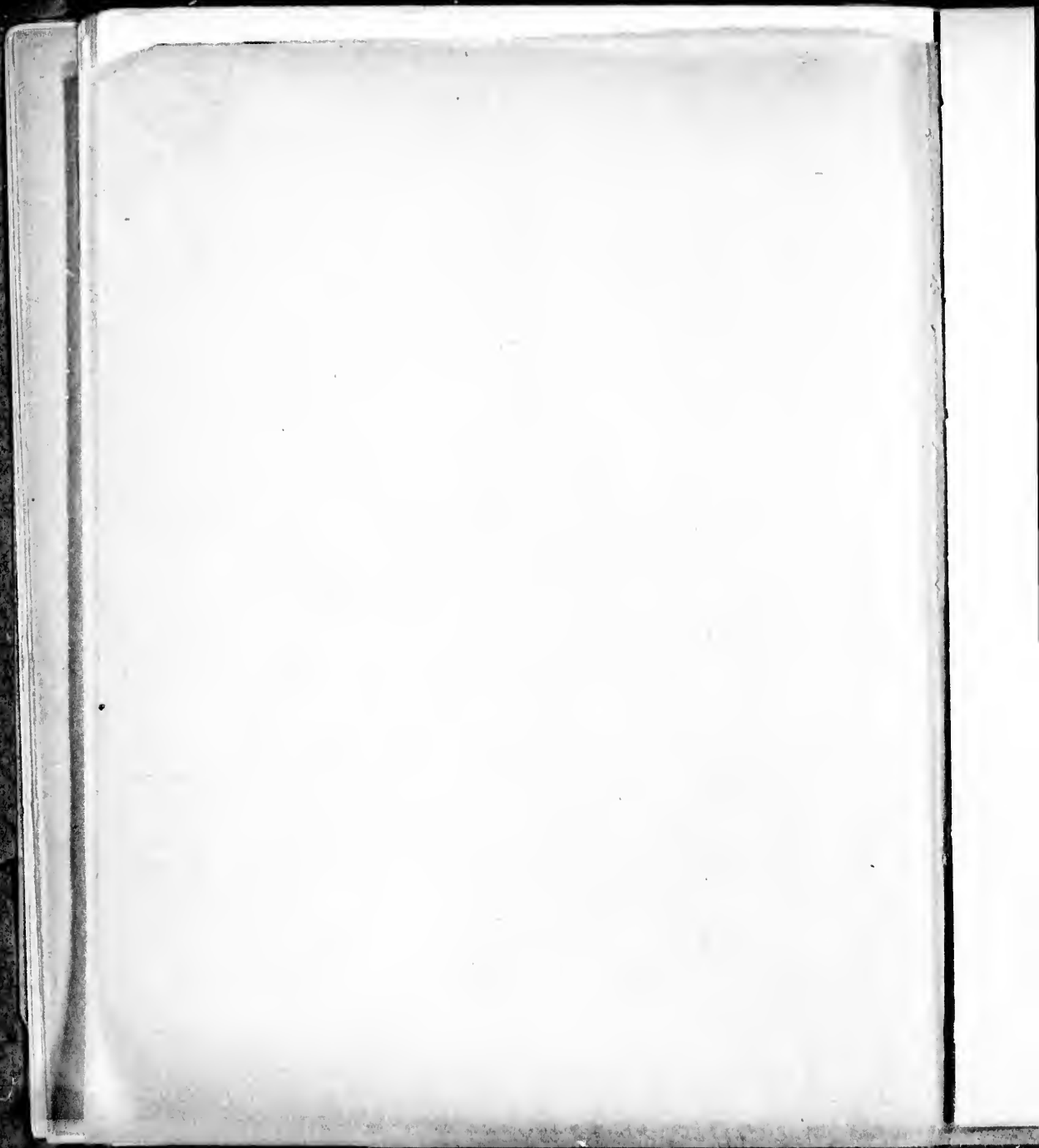
1871

...

...



THE LEFT SIDE.



1837.



It was five o'clock on the morning of the 20th of June when the doors of Kensington Palace, where the Princess Victoria dwelt with her mother, were opened to the Archbishop of Canterbury, the Lord Chamberlain, and the physician of William IV., Sir Henry Hallford. They had come direct from the dark chamber of death at Windsor to tell the youthful Princess, who had attained the age of eighteen on the 24th of May, that she was Queen of one of the greatest amongst the nations. The intelligence had been momentarily expected. The household was astir at that early hour of the sunny morning; the three messengers were at once in the presence of their Sovereign Lady. Lord Melbourne had an audience at nine o'clock. At eleven the state apartments of Kensington Palace were filled with Members of the Privy Council of the late King—Peers, Cabinet Ministers, the two Archbishops, the Lord Mayor of London, Right Honourable Commoners. The Duke of Cumberland, now King of Hanover, and the Duke of Sussex, were conspicuous in that historical group which Wilkie has painted. The doors of the Council Chamber were opened, and Queen Victoria, entering with the Duchess of Kent—pale, but perfectly self-possessed—took her seat at the head of the Council

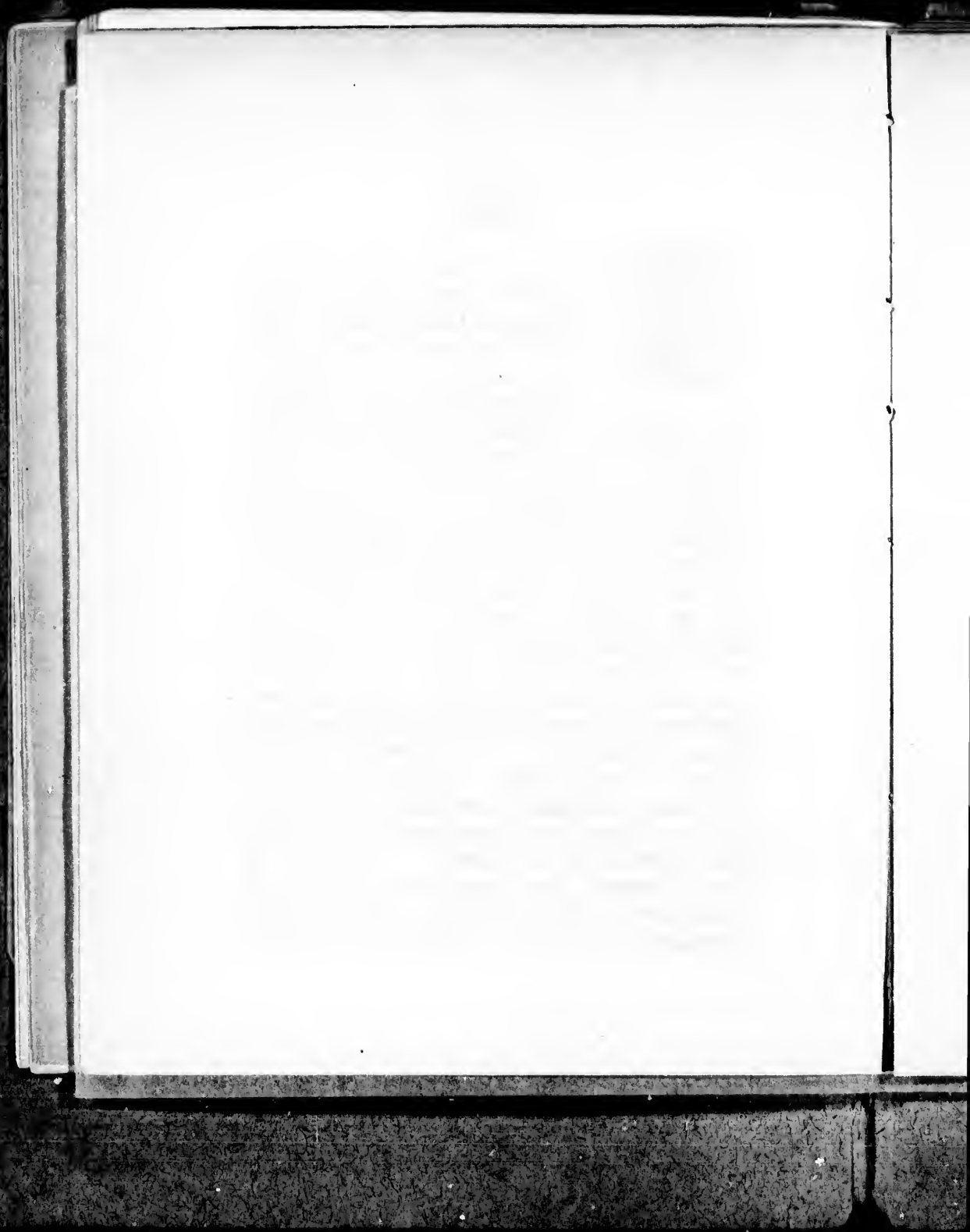
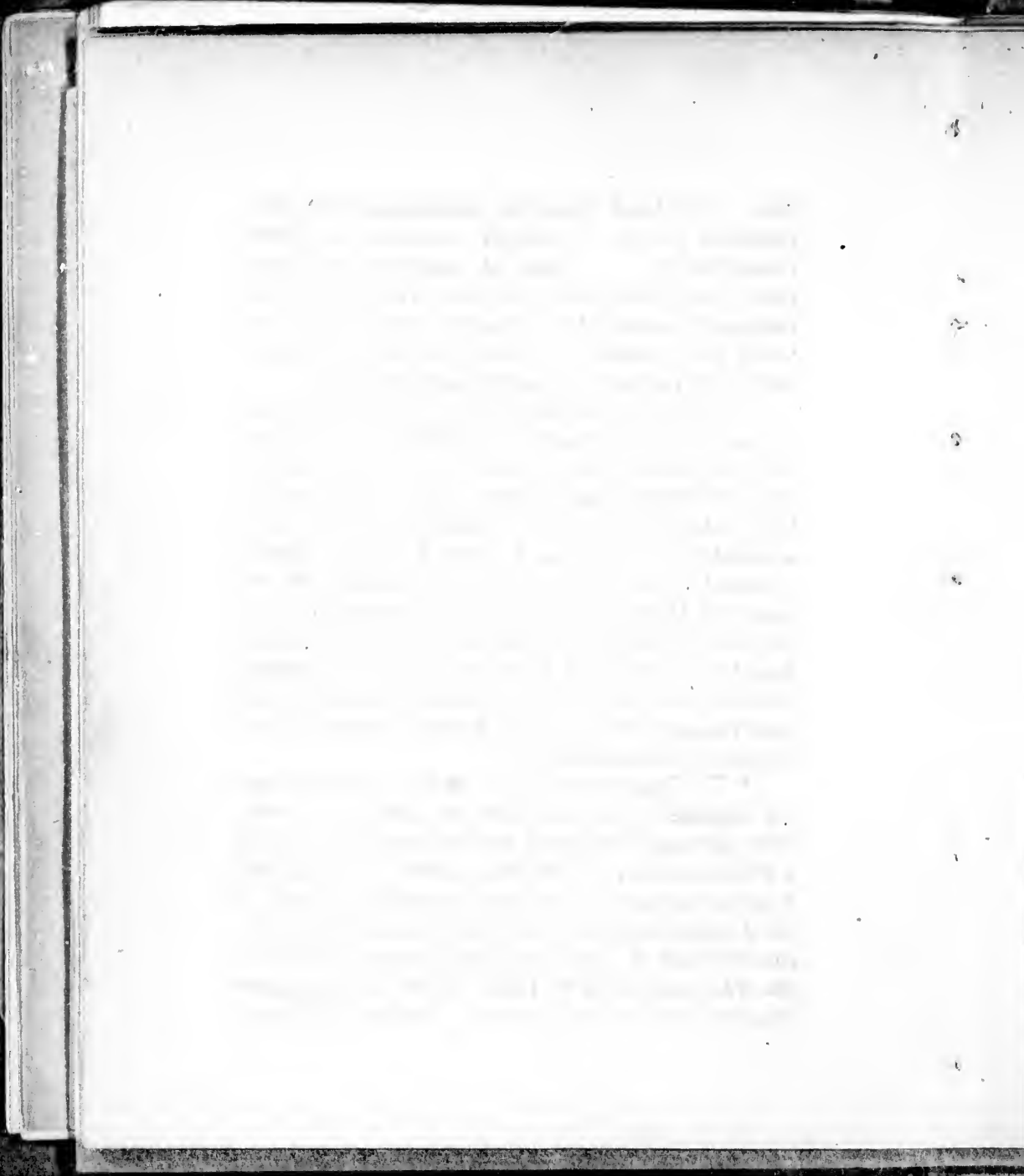


table. The Lord Chancellor administered the oaths prescribed for the sovereign's accession; the Privy Councillors took the oaths of allegiance and supremacy; and then for the first time was heard by her assembled subjects that exquisitely modulated voice which for a quarter of a century has lent a charm to the formal periods of a speech from the throne.

"The severe and afflicting loss which the nation has sustained by the death of His Majesty, my beloved uncle, has devolved upon me the duty of administering the government of this Empire. This awful responsibility is imposed upon me so suddenly, and at so early a period of my life, that I should feel myself utterly oppressed by the burden, were I not sustained by the hope that Divine Providence, which has called me to this work, will give me strength for the performance of it, and that I shall find in the purity of my intentions, and in my zeal for the public welfare, that support and those resources which usually belong to a more mature age, and to long experience."

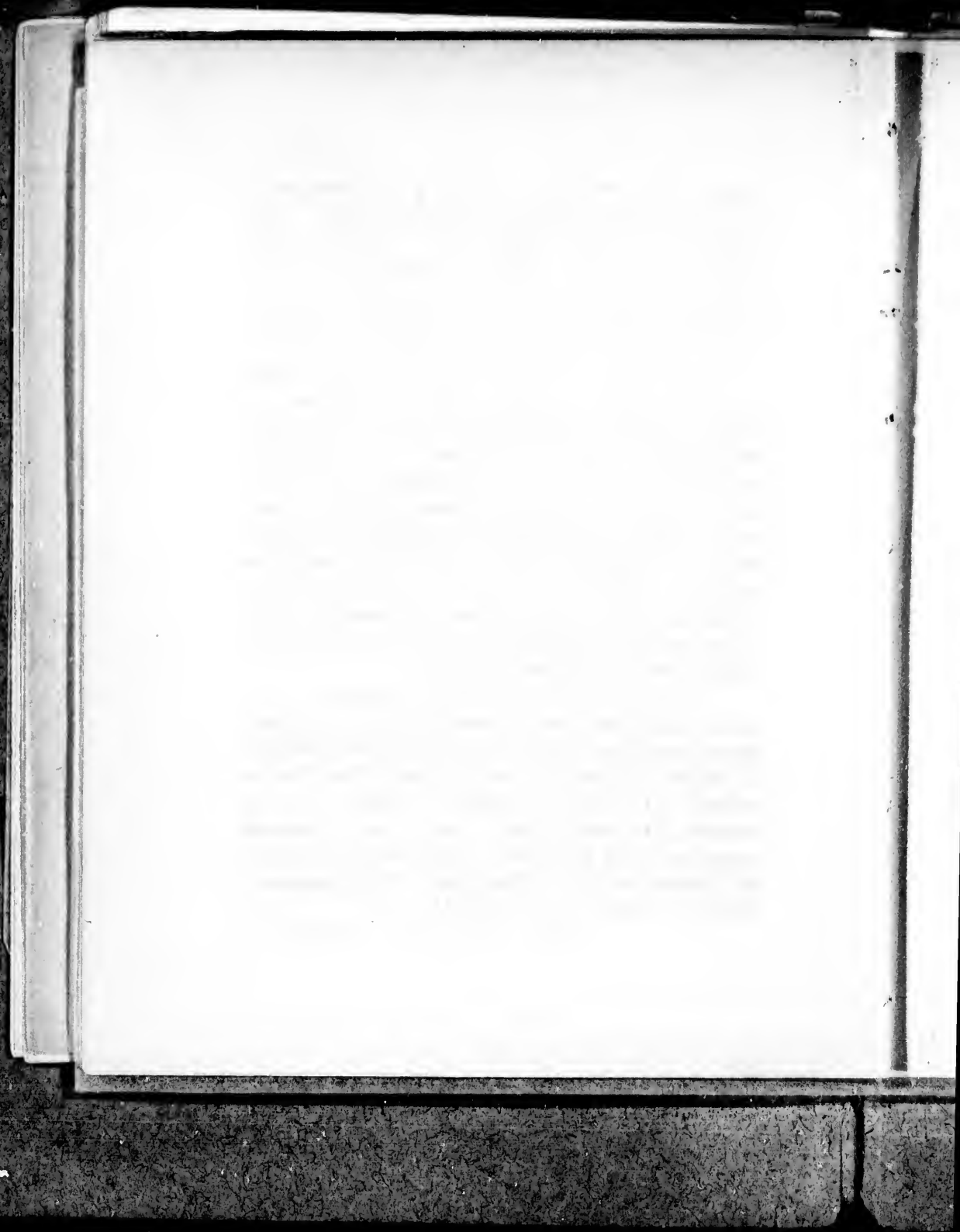
"The Queen's demeanour on that eventful morning impressed every one who was present, not only with profound admiration, but with confident hope of a glorious future. There was evidence of a high and generous nature in her solemn expression of regret at the domestic calamity which had just occurred; in her manifestation of a deep and awful sense of the duties she was called upon to fulfil. When the newspapers described how, on the next day, Victoria, the Queen,



appeared at a window overlooking the courtyard of St. James' Palace, 'dressed in black silk, with a crape scarf over her white tippet, and a little black chip bonnet,'—when they told how, looking 'paler than usual,' she wept as she acknowledged the plaudits of the people, such plaudits 'as never could be surpassed'—there were few amongst her subjects who did not put up a prayer for the happiness of this young creature, exposed so early to all the temptations of luxury and all the bewilderments of power. But there was little fear. There was confidence—as she had been brought up in the unobtrusive simplicity of her mother's life—a her natural abilities had been diligently cultivated—as from her childhood she had learnt the great lessons of self-denial—as she was well grounded in religious principle—that the perils of such greatness would be escaped. Never were the feelings of the nation more nobly expressed than by a voice from the pulpit of the Metropolitan Cathedral:

“What limits to the glory and happiness of our native land, if the Creator should, in his mercy, have placed in the heart of this Royal Woman the rudiments of wisdom and mercy; and if, giving them time to expand, and to bless our children's children with her goodness, He should grant to her a long sojourning upon earth, and leave her to reign over us till she is well stricken in years. What glory! What happiness! What joy! What bounty of God!”

“Knight's Popular History of England.”





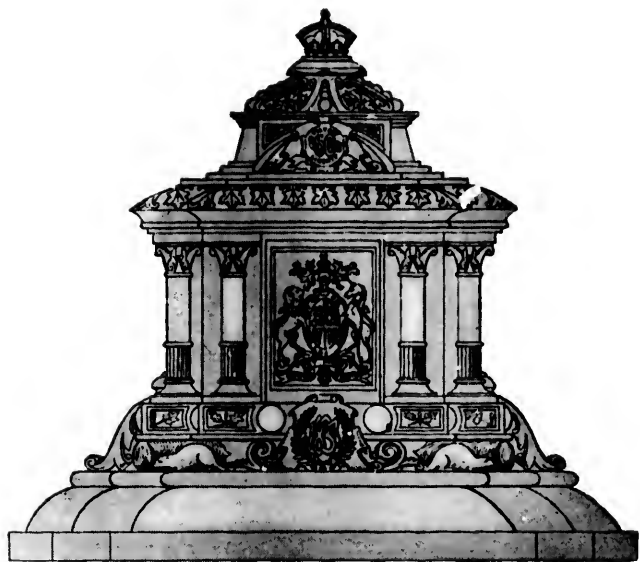
RIGHT SIDE.



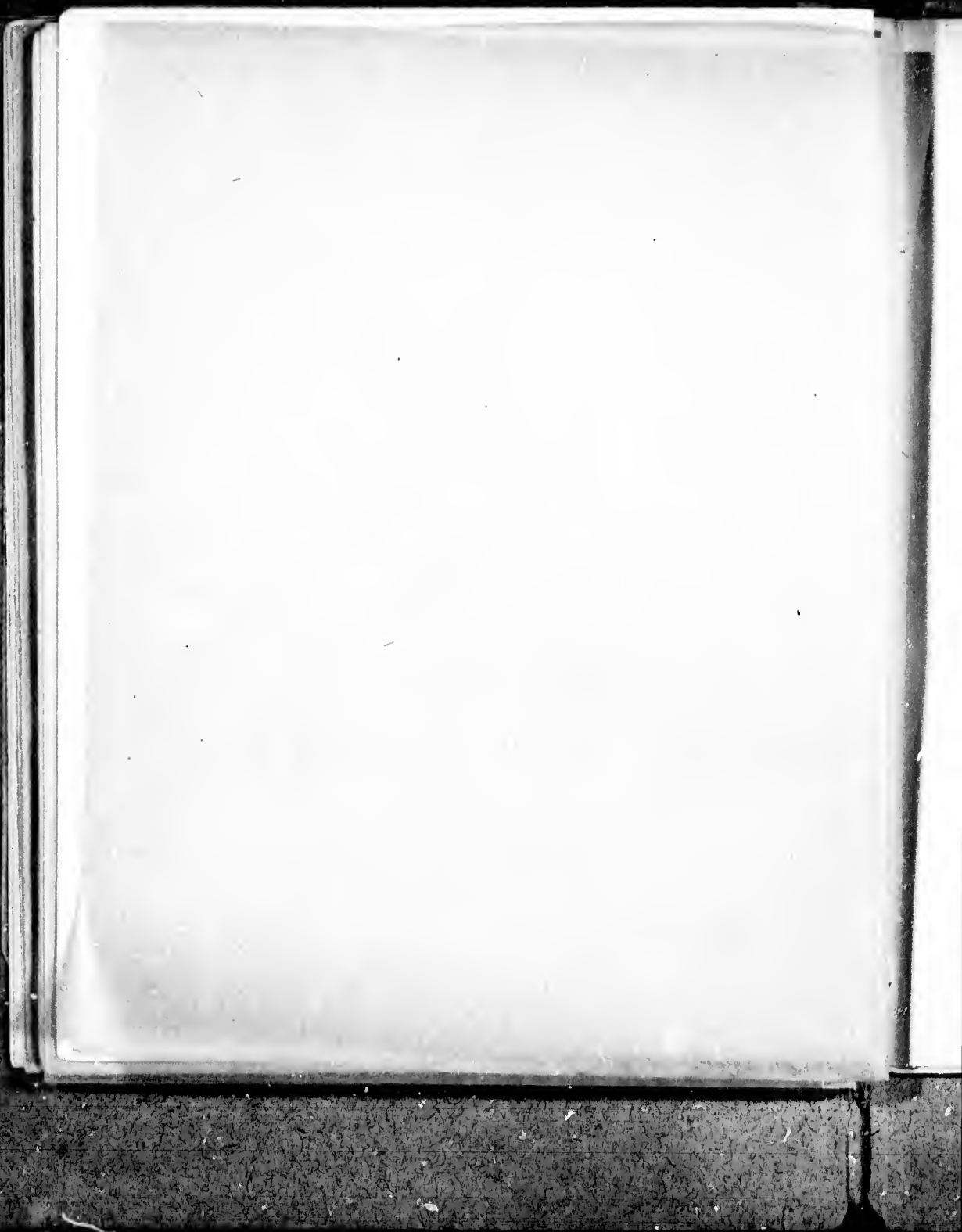
HIS corresponds exactly with the left. The central panel is the British coat-of-arms, the figures in relief, with the shield ribbon and motto in correct colors, hard enamel. The columns on this side are, on the left—Wilsonite (Burgess, Ont.,) on the right—Sodalite (Dunganon, Ont.); the boss on the left—Microclene (Wakefield, Que.,) on the right—Pyroxene (Templeton, Que.) In the wreath below is the date 1837. On the cover above, the monogram—"60 years" and the words "Victory and Liberty." The Crown appears above, as on the other sides.







THE RIGHT SIDE.



LE ROI
MINING AND SMELTING
COMPANY.



Spokane, Wash., April 26th, 1897.

Mr. W. G. Gooderham,
Toronto, Ont.

Dear Sir,—At the request of Mr. John B. Hastings, of the War Eagle Mine, I have this day sent to you, per express, a bar of gold from the Le Roi Mine, which I understand is to be used in making some kind of a testimonial to Queen Victoria. Mr. Hastings requested us to send him a bill for the amount, which my Company has instructed me not to do. The Le Roi Mining and Smelting Co. is as much a subject of the grand and good old lady as is the War Eagle, and we know of no reason why the War Eagle should pay us for it.

Hoping our donation will be received in the same good spirit in which it is made, I am

Respectfully yours,

W. W. D. TURNER,
President.

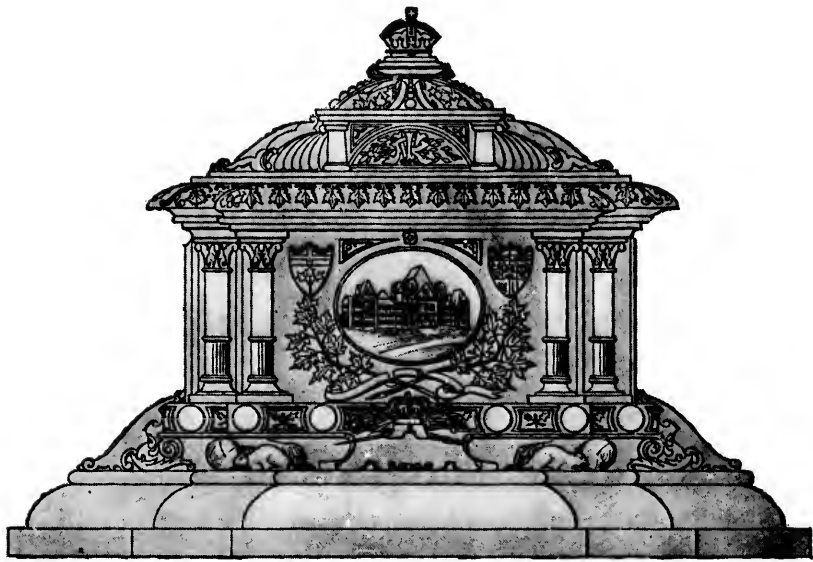


THE BACK.



HOUGH described as the back, this is identical in style and workmanship with the front. The centre is a reproduction of the Ontario Parliament Buildings. On the left above it is a shield with the Ontario coat-of-arms; on the right, one with that of the Dominion. Encircling it below is a wreath of maple leaves. The columns on the left are Sodalite (Dungannon, Ont.) and Spar (Villeneuve, Que.); on the right—Sodalite (Dungannon, Ont.) and Pyroxene (Templeton, Que.) The bosses below are Limonite (Londonderry, N.S.); Silicified Wood (Saskatchewan, N. W. T.); Scapolite (Grenville, Que.); Agate (Cape d'Or, N. S.); Amazon Stone (Cameron, Ont.); Albite (Villeneuve, Que.) On the cover, between two columns of Brecciated Jasper (Hull, Que.) is the monogram "V. R. I." beneath the Imperial diamond set Crown.





THE BACK.





INTERIOR.



THE lining of sky blue velvet plainly covers an interior of 5 x 7 inches. Here will be placed the volume containing the expression of the love and devotion of the Queen City.



THE UNIVERSITY OF CHICAGO
LIBRARY
540 EAST 57TH STREET
CHICAGO, ILL. 60637
U.S.A.

THE OUTER CABINET.

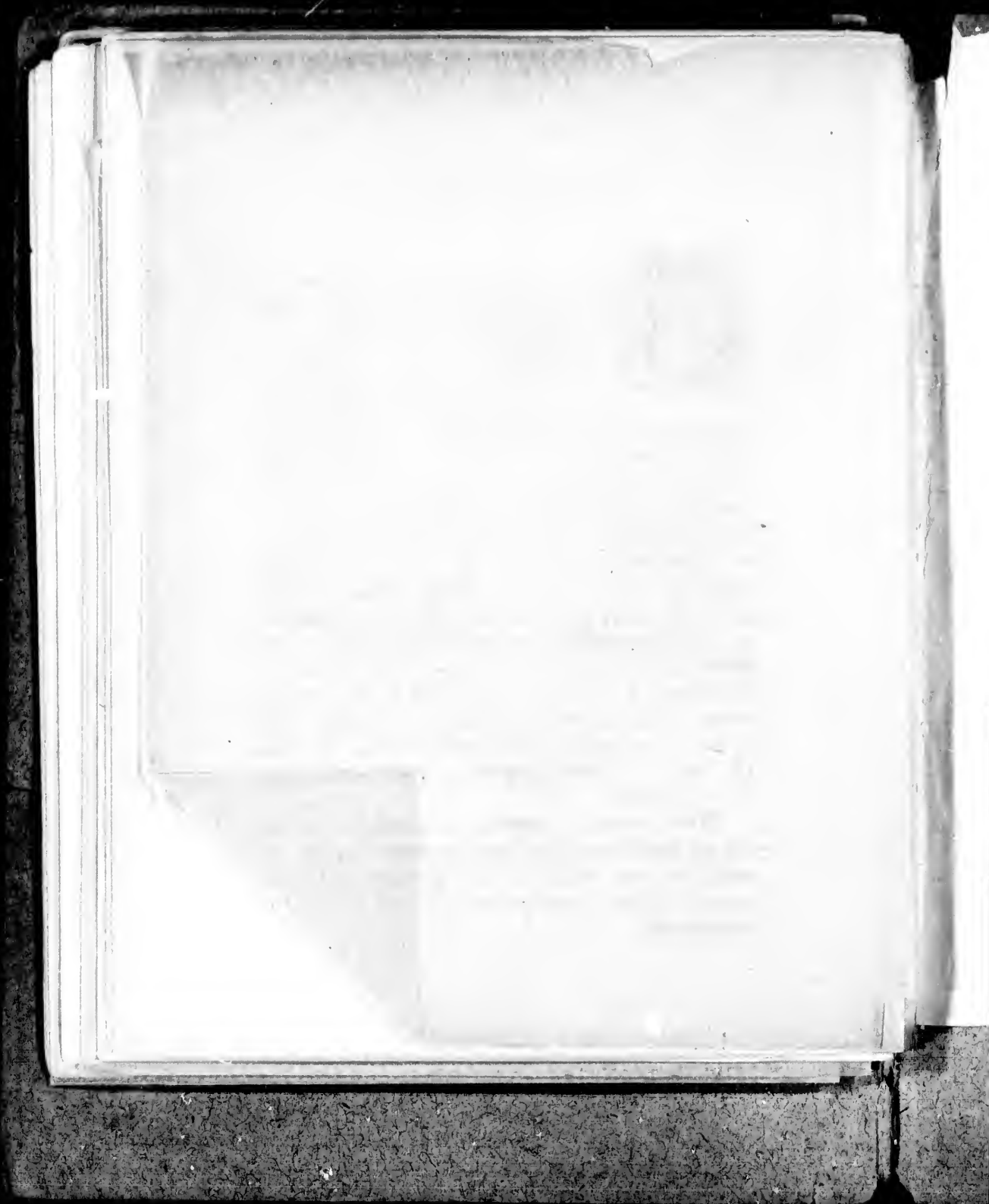


THE Cabinet which is to contain the Jubilee Casket was designed and manufactured by the Hemming Manufacturing Co. of Toronto. A number of beautiful Canadian woods are employed on the Gothic exterior.

The lid, arches, panels and plynth are all made of highly polished bird's-eye maple; oak columns resting on walnut bases support the arches, within which are exquisitely selected specimens of curly ash. ✽ The carved mouldings, maple leaf spandrils, capitals, etc., are all red cedar, contrasting well with the bird's-eye maple. ✽ The interior is faultlessly lined with rich purple silk velvet, all the borders being bird's-eye maple.

The most striking feature of the Cabinet is the method of its construction. To permit a full view of the Casket, all four sides are hinged at the base and mitred at the corners so as to fall outwards. The top is cut across the middle and hinged at the ends. The lock is of special construction, and inserted in the centre of the lid.

While serving to enclose the casket, this cabinet will exhibit some of our most important woods, and satisfy the most critical that in designing and workmanship Canada compares favorably with any country in the world.



Dated 23rd March 1897

Ryrie Bros

and

City of Toronto

Contract

for supply of a Casket
to be presented to Her
Majesty Queen Victoria

authorized by Report to
B of the Board of Control
adopted by the Council
23rd March 1897

M. Bloom
City Clerk

Thomas Caswell,
City Solicitor

